

"CONCOURSE QUALITY, HOBBYIST PRICE"



12007 W. PEORIA AVEUNE
EL MIRAGE, AZ 85335
(623) 935-2558
(623) 935-2579 FAX

DELUXE REPORT



Official Licensed Product

5012

Proud to display this symbol

Copyright Kevin Marti 2005

Thank you for your interest in our services. We have determined the following information for your car from the Ford Database we have:

VEHICLE ORDER IMAGE

12345678901234567890123456789012345678901234567890123456789012345678901234567890
8R01C148309 M 2A 2 08C0773 7B5C1 W2 F2 1E 2 22 1 71A006 B

DOOR DATA PLATE INFORMATION

Serial Number 8R01C148309

8 1968

R Built at San Jose

01 Mustang Hardtop

C 289-2V

48,309th Ford vehicle scheduled for production at San Jose

65A Mustang Hardtop

M Wimbledon White Paint, Ford #1619-A

2A Black Standard Bucket Seats

08C Scheduled For Build: March 8, 1968

71 Los Angeles Ordering District

2 2.79 standard axle ratio

W C-4 Select Shift Cruise-O-Matic

ORDER TYPE STOCK

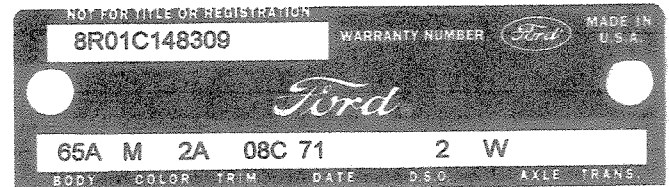
DSO ITEM #: 0773

DEALER#: 71A006

COBERLY FORD

4120 S WESTERN ST

LOS ANGELES CA 90062



IMPORTANT DATES:

ORDER RECEIVED:	02/07/68
CAR SERIALIZED:	02/27/68
BUCKED:	02/29/68
SCHEDULED FOR BUILD:	03/08/68
ACTUALLY BUILT:	03/04/68
RELEASED:	03/05/68
SOLD:	10/02/68

STATISTICS

Your car was one of:

21,576 With this Paint Code
6,622 With these Paint/Trim Codes
114,971 With these Engine/Transmission Codes
23,767 Ordered from this DSO
4,118 With California Special

For the 1968 Mustang Hardtop.

Your vehicle was ordered with the following options:

California Special
C-4 Select Shift Cruise-O-Matic
F70X14 Wide Oval Tires
White Sidewall Nylon Tires
Console
Power Steering
AM Radio
Tinted Glass
Deluxe Belts
Heavy Duty Suspension

Your car was actually produced on March 4, 1968 -- four days ahead of schedule.

Kevin Marti
Kevin Marti